

Hong Kong SME Survey 2025

Work Safety and Talent Retention



Hong Kong SMEs concerned about numerous business risks, but few invest in protective measures

Loss of income due to business interruption



only **24%** have insurance coverage

Impact of losing staff



only **19%** have insurance coverage

Equipment malfunction



only **25%** have insurance coverage



Hong Kong businesses are increasing their focus on work safety and mental health



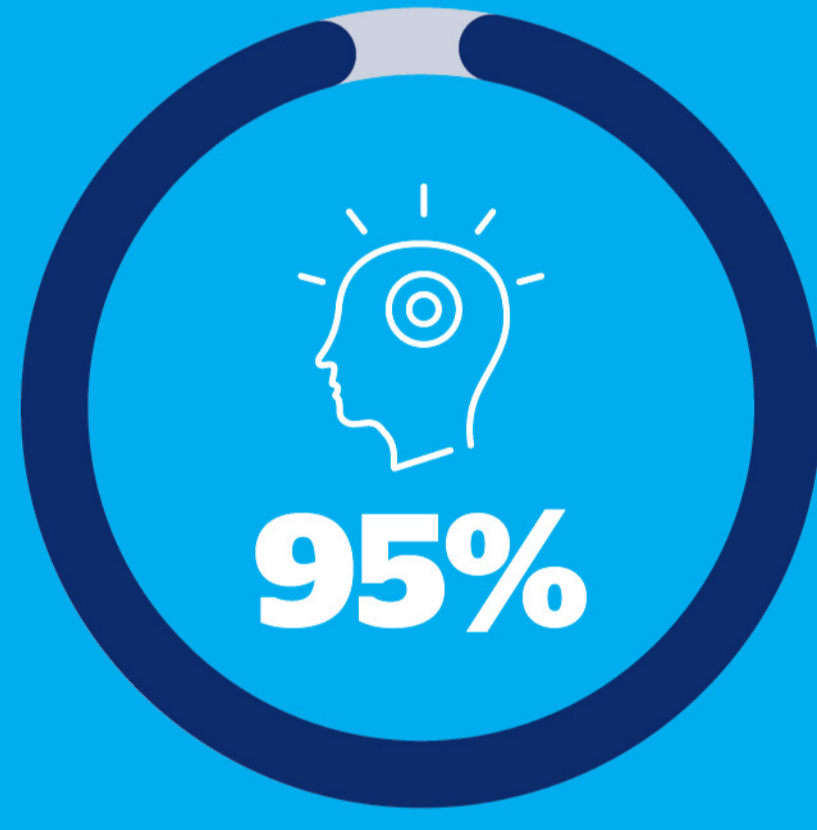
Communicate coverage and benefits to their employees



Aware of employees' compensation insurance



Experienced between one and three workplace safety and health events during the past year.



Said mental health was very important and somewhat important

More SMEs are implementing measures to improve both mental and physical wellbeing.



46%

Offer flexible working hours for improved work-life balance

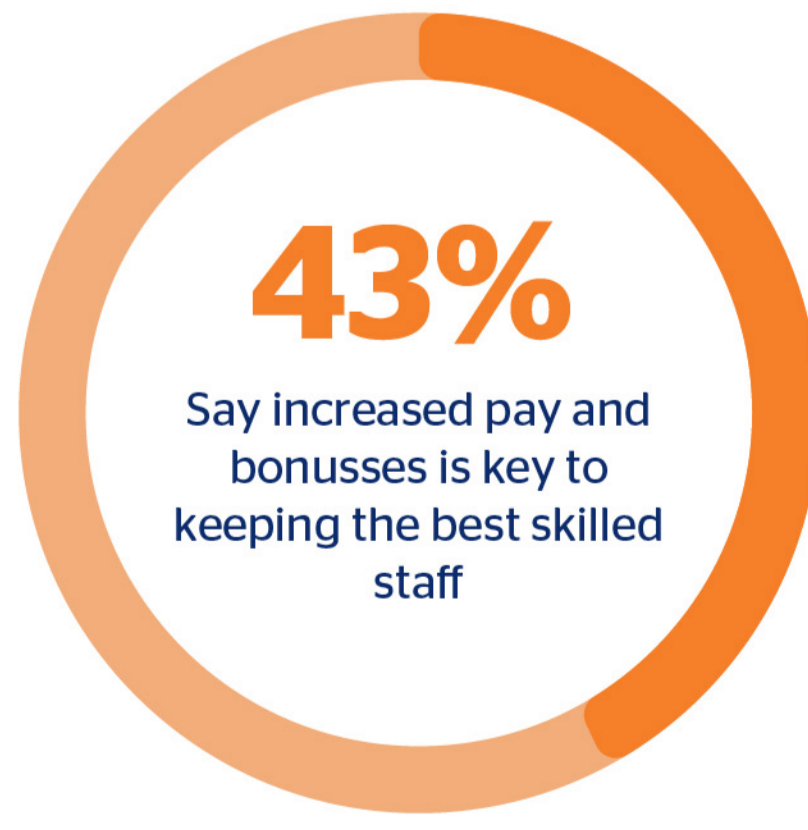


40%

Offer work from home arrangements



SMEs are placing even more focus on talent attraction and retention



Hong Kong is increasing its reliance on older workers aged 65 or over.



Speak to QBE Hong Kong about your insurance and risks management needs today.

Visit us at qbe.com/hk or contact us at claims.hk@qbe.com