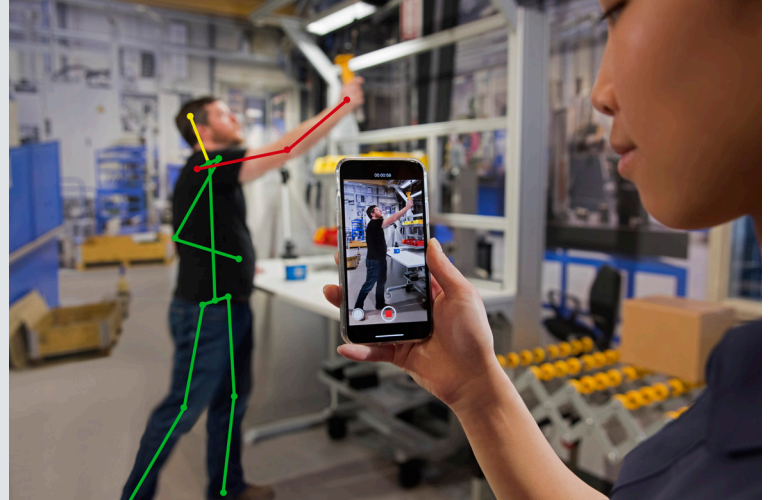


Smarter Assessments with Artificial Intelligence



Sensorless Motion-Capture Technology

Now there's a smarter way to assess jobs for musculoskeletal disorder (MSD) risk using the [Humantech software](#) from VelocityEHS. This technology, powered by [Kinetic Labs](#), harnesses artificial intelligence and computer vision to help you accurately assess jobs and quickly capture real-time data with the video camera on any mobile device.

Why motion capture?

- **Accurate** - Eliminate the variability and human error that comes with traditional, observations-based methods.
- **Fast** - Reduce the assessment process from hours to just minutes. Spend more time engaging with employees and fixing jobs.
- **Precise** - Obtain greater fidelity and gather more data than the human eye can see.
- **Easy** - No in-depth training is needed, and no extra equipment, sensors, or wearables are required.

Three easy steps:

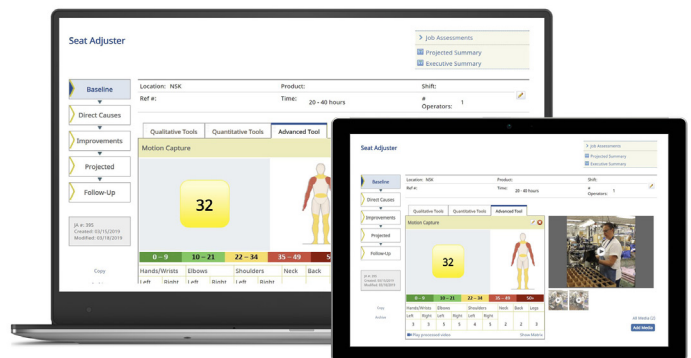
1. Take a video of an operator performing a job or task.
2. Upload it to the Humantech industrial ergonomics software.
3. Receive results in minutes.

How it works:

Through artificial intelligence and computer vision, the software recognizes body segments and records joint angles, frequencies, and durations of the postures during movement. The output displays a skeletal overlay on the original video, and indicates the risk levels in colored lines.

Who can use it?

Anyone looking to accurately and quickly assess jobs for MSD risk can benefit from this new technology. From ergonomics teams to design engineers, this method supports a participatory approach to ergonomics, involving and engaging many, resulting in a visible and sustainable process.



Questions on Loss Control or Safety

Contact QBE

- Visit the site: [QBE Risk Solutions Center](#)
- Call QBE at: **888.560.2635**
- Email QBE at: RSC@us.qbe.com

Contact Us

VelocityEHS | Humantech

1161 Oak Valley Dr.
Ann Arbor, MI 48108
(734) 663-6707

Online: www.humantech.com

