

# Financial Institutions

Mitigate evolving financial institution risks.

Leaders of financial institutions can rest assured that QBE's suite of products and services can help them mitigate the risks of the ever-changing market landscape. Our product suite offers an extensive range of insurance coverage for the liabilities directors and officers face, and is tailored specifically to meet the needs of financial institutions.



Up to **\$10M**  
Capacity



### Products

Management liability (directors & officers liability, side A liability, outside director liability, employment practices liability, fidelity bonds, fiduciary liability), professional liability (errors & omissions liability)



### Target Industries

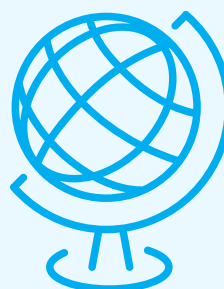
Asset managers, banks, family offices, insurance companies

### QBE is a global insurance leader

focused on helping customers solve unique risks, so you can focus on what matters most.



2021 Global GWP  
**\$18.5 billion**



OVER **11,000**  
employees worldwide



**Innovative  
Premiums4Good  
Initiative**

Listed on **Forbes Global 2000**  
list of public companies

Located in  
countries

**27**



Can write business in **180** countries

RATED

**A+**  
by Standard  
& Poor's

**A**

(Excellent)  
by A.M. Best

2021  
North America  
GWP



**\$6.3 billion**

# Financial Institutions

For more information, please contact one of these QBE representatives:

**Tom Kocaj**

SVP, Head of Management Liability  
[thomas.kocaj@us.qbe.com](mailto:thomas.kocaj@us.qbe.com)  
212.601.6897

**Adam Fleischner**

SVP, Financial Institutions  
[adam.fleischner@us.qbe.com](mailto:adam.fleischner@us.qbe.com)  
732.614.5752

**EAST**

**Paul Humel**

Vice President  
[paul.humel@us.qbe.com](mailto:paul.humel@us.qbe.com)  
212.601.6858

**Justin Mele**

Assistant Vice President  
[justin.mele@us.qbe.com](mailto:justin.mele@us.qbe.com)  
212.601.6789

**John Tiene**

Assistant Vice President  
[john.tiene@us.qbe.com](mailto:john.tiene@us.qbe.com)  
212.894.7582

**Gabriel Speciale**

Lead Underwriter  
[gabriel.speciale@us.qbe.com](mailto:gabriel.speciale@us.qbe.com)  
212-805-9882

**CENTRAL**

**Cyrus Maddox**

Vice President  
[cyrus.maddox@us.qbe.com](mailto:cyrus.maddox@us.qbe.com)  
630.250.5401

**WEST**

**Mackenzie Parke**

Vice President  
[mackenzie.parke@us.qbe.com](mailto:mackenzie.parke@us.qbe.com)  
646.705.3338

**NATIONAL MIDDLE MARKET ACCOUNTS TEAM**

**Sean Fleming**

Vice President  
[sean.fleming@us.qbe.com](mailto:sean.fleming@us.qbe.com)  
860.408.3260

**Kevin Carey**

Lead Underwriter  
[kevin.carey@us.qbe.com](mailto:kevin.carey@us.qbe.com)  
312.803.1710

**QBE North America**

55 Water Street  
New York, NY 10041  
[qbe.com/us](http://qbe.com/us)

 @QBENorthAmerica