

Global Risk Solutions

Virtual solutions

As a top global insurer, QBE offers a consistent approach to risk prevention on a local, national and global level. We pride ourselves on providing global resources with a consistent quality assurance process to deliver world-class service to our customers.

QBE's Global Risk Solutions teams are industry leading experts in risk and delivering loss prevention and loss protection services. Our focused commitment to service and technical acumen helps customers identify, evaluate and reduce their potential for losses and business risk. By getting to know our customers, their business operations, priorities and concerns, we can help deliver the best possible outcomes.

QBE virtual service delivery approach

E-technology is broadly understood to include the Internet and related information technologies, and in recent years, its use has grown rapidly. Virtual service delivery offers additional methods for reaching our clients through interactive video and telephone conferencing technology, especially during emergency conditions like a pandemic or natural disaster.

Benefits include:

- two-way, real-time, audio-visual communication between the customer and the QBE Global Risk Solution consultant
- effective use of time (e.g., no travel, etc.)
- secure video conferencing platform such as FaceTime and Microsoft Teams

Using the virtual service delivery approach, our consultants can maintain their ability to provide high-quality evaluations of loss exposures. They can then customize plans to assist with management, mitigation and reduction of potential risks. These customized plans may also help customers build a safer work environment, lower expenses, increase engagement and productivity, drive a stronger culture and improve profits.

Product expertise

- Property
- General liability
- Product liability
- Workers' compensation
- Fleet

Industry expertise

- Manufacturing
- Hospitality
- Real estate
- Wholesale
- Retail

**Results are important.
We know having a risk
partner you can trust
with your business
needs is important.
We look forward to
partnering with you.**

Virtual loss control services

General

- Preliminary online risk assessments
- Policies and Procedures Review
- Loss trending and analysis
- Training program development/delivery
- Online video training
- Customized audit programs
- Training libraries, newsletters and technical support

Workers' Compensation

- Safety program development and accountability
- Safety management systems
- Safety incentive programs
- Ergonomics
- Job hazard analysis
- Accident/incident investigation
- Return to work

General Liability

- Product liability risk assessment & control
- Risk transfer and vendor qualification
- Contractor safety program reviews

Motor Vehicle and Fleet Safety

- Driver accountability programs
- Training

Property

- Project specification reviews
- Sprinkler protection and water supply reviews
- New construction design reviews
- Special hazards consultation
- Natural hazard identification

QBE's digital virtual loss prevention

QBE's digital workshop series connects risk management experts and business owners in a collaborative online environment. Topics include:

- Disaster preparedness
- Emergency response
- Active shooter
- Pandemic response
- Opioid addiction and drug testing

QBE can develop customized digital workshops tailored to specific insured needs with multiple locations or large employee groups across wide geographic areas.

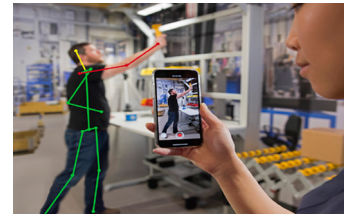
E-technology at a glance

Humantech Industrial Ergonomics is an all-in-one solution for managing workplace ergonomics through identifying objective risk factors and helping to measure continuous improvement. It combines online training and assessment tools, expert led site improvement events, and a powerful management database for your organization to deploy, monitor, and manage the ergonomic process.

Benefits of Humantech include:

- **Smarter assessments with Artificial Intelligence.**

New sensorless motion-capture technology harnesses artificial intelligence to quickly capture real-time assessment data with the camera on any mobile device.

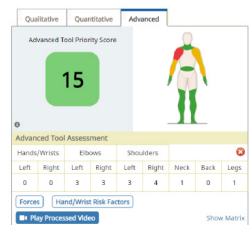


[Click here to learn more.](#)

- **Consistency.** On-demand e-learning provides up-to-date content whenever and wherever you need it, ensuring a simple, common way to measure risk.

- **Quick to implement.** Easily build knowledge and skills quickly right on site.

- **Visuals.** The easy-to-use, highly visual system includes scoring and reporting tools to share enterprise-wide data and highlight trends



- **Engagement.** The participatory process involves a number of individuals, from shop floor ergonomic teams, to managers, to leadership.

- **Data-Driven.** The system allows for easy categorization of issues to push the ergonomics process upstream and "design out" the risk of injury.



Questions on Loss Control or Safety

- Visit the site: [Risk Solutions Center](#)
- Call us: **888.560.2635**
- Email us: RSC@us.qbe.com

QBE makes no warranty, representation, or guarantee regarding the information herein or the suitability of these suggestions or information for any particular purpose. QBE hereby disclaims any and all liability concerning the information contained herein and the suggestions herein made. Moreover, it cannot be assumed that every acceptable risk transfer procedure is contained herein or that unusual or abnormal circumstances may not warrant or require further or additional risk transfer policies and/or procedures. Please note that any referrals to service providers should not be construed as recommendations as we cannot provide any representation or warranties regarding work done by others. Further, we are not requiring that you use the listed service providers as you are free to choose if this or another vendor meets your needs. The use of any of the information or suggestions described herein does not amend, modify, or supplement any insurance policy. Consult the actual policy or your agent for details about your coverage.