

# Data Collection Tips



## Recording Video

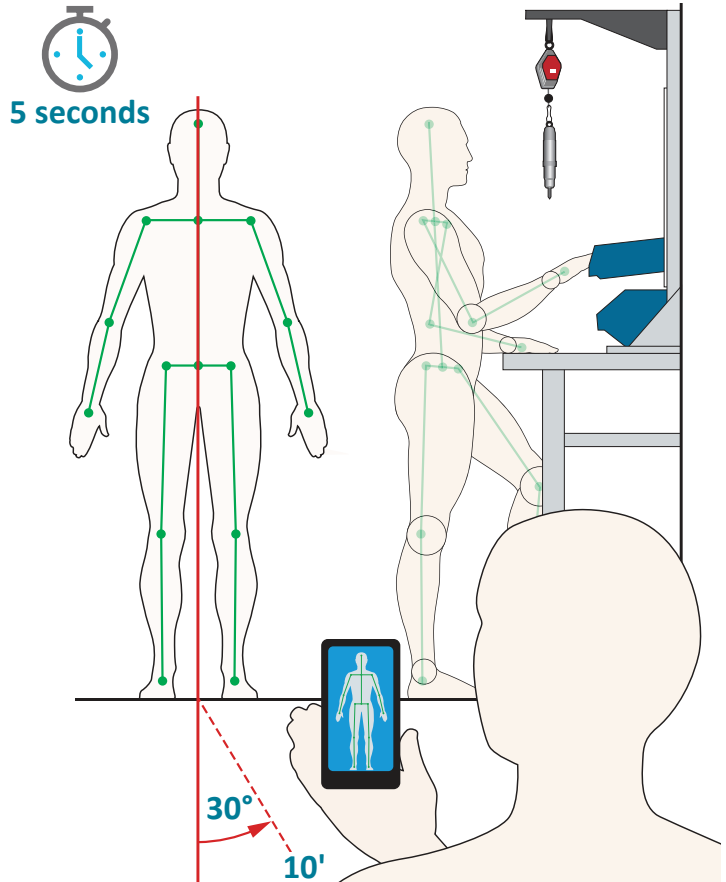
### 3 Ds of Motion Capture

**Droid:** Subject must stand still, facing camera, for 5 seconds at start

**Degrees:** 30° angle from subject

**Distance:** 10 ft (3 m) from subject

- Record video using the camera app on your device.
- Keep the operator's entire body in the video frame.
- When recording seated work, the legs should not be included in the video frame. If necessary, film from the waist up.
- When it is safe to do so, walk around the operator while recording, keeping all limbs as visible as possible.
- Keep the operator in the foreground; do not let other individuals cross in front.
- The operator should stay on-task during the entire video.
- High-contrast clothing, in relation to the background, is best.
- Videos between 30 seconds and 2 minutes are recommended.
- Upload video directly to the Humantech software from the device's library. Do not e-mail videos.
- Maintain a good internet connection during the entire upload process.



### Questions on Loss Control or Safety

#### Contact QBE

- Visit the site: [QBE Risk Solutions Center](#)
- Call QBE at: **888.560.2635**
- Email QBE at: [RSC@us.qbe.com](mailto:RSC@us.qbe.com)

#### Contact Us

##### VelocityEHS | Humantech

1161 Oak Valley Dr.  
Ann Arbor, MI 48108  
(734) 663-6707

Online: [www.humantech.com](http://www.humantech.com)

